



Sustaining an Academy in Tough Economic Times

This presentation can be viewed at:

<http://www.sjrbiz.info> "P.D. Presentations"

or

<http://www.ezeport.com/NAF%20Institute/index.htm>

Presenter: Stephen Rocco

*Academy of Finance Director
Smithfield High School
Smithfield, RI*

Email: SRocco@smithfield-ps.org

Our website: <http://www.shsaof.org>

Slide Handouts – 1-2, 7-15, 44

7-Jul-10

SRocco@smithfield-ps.org



Fun & Interesting Resources

- [You Tube "Sesame Street Explains Bernie Madoff"](#)
- [ABC News' Robert Krulwich Explains the Credit Crunch](#)
- [Mike Barnacle's View on College Acceptance/Rejection Letters](#)
- [Father Guido Sarducci "Five Minute University"](#)
- [Teacher Tube "Pay Attention – Digital Learners"](#)
- [Google Docs](#)

7-Jul-10

SRocco@smithfield-ps.org





We Earn District Support

- **School Committee, District and Building Administrators, Families (*Taxpayers*)**

How do They Support Us?

- ***Commitment to the Program through:***
 - Job Retention (*4 Business Teachers*)
 - Lower Class Sizes and Priority Scheduling
 - Funding (\$6,000)
 - Approval of Field Trips
 - Approval of Professional Development
 - Allow some Autonomy

7-Jul-10

SRocco@smithfield-ps.org



We Earn District Support

- **Why do they support us?**

Because we . . .

- *Provide Publicity – Newspaper, Radio Show, Legislature*
- *Report Annually to School Committee to Show Data*
- *Maintain Student Achievement at a High Level*
- *Meet Expectations and Standards*
- *Go The Extra Mile*
- *Maintain College Articulation Agreements*
- *Have 100% Post-Secondary Enrollment*
- *Provide Community Outreach*
- *Include them in all Meeting and Event Invitations*

7-Jul-10

SRocco@smithfield-ps.org





We use “Entrepreneurial Actions” to create a “Root Structure.”



Embedding your Academy Roots so deep it makes it difficult for the school board and administrators to pull up.

Like a tree and like a business, your academy has internal factors (controlled) and external (uncontrolled) threats that lead to your success or failure.

Take control internally and minimize the risk of damage from outside threats!

7-Jul-10

SRocco@smithfield-ps.org



BACK to
FLOW CHART



Some Recommendations

This is not about your job security. It is about your entire Business, FCS, or Technology department’s security. Create your own “added value” and “think long term” even if they (*district administrators*) can’t.

- *Look for Opportunities – Be Proactive*
- *Be Aware of Threats*
- *Be Innovative & Flexible*
- *Be Patient*
- *Don’t Get Discouraged – Be Perseverant*

7-Jul-10

SRocco@smithfield-ps.org



BACK to
FLOW CHART



Some Recommendations

Electives are an “endangered species”, but with an academy you can develop them into a “branded” product.

Most Importantly

- *Understand that nothing you do is fool proof.*
- *There is no true security.*
- *You are working to put the odds in your favor.*

7-Jul-10

SRocco@smithfield-ps.org



NATIONAL
ACADEMY
FOUNDATION

2010 Institute for
Staff Development

3 Stages of Academy Development

1. **Planning and Initial Implementation to Develop**
 - *Y.O.P., Course Structure, Outcomes, District and Admin. Approvals, Student Application Process, etc.*
2. **Build/Grow**
 - *Build Member Benefits, Advisory Board, Use Data to Self-Assess, Begin Promoting*
3. **Sustain (Maturation)**
 - *Modify, Revise, Use Data to Self-Assess, Continue Promoting*

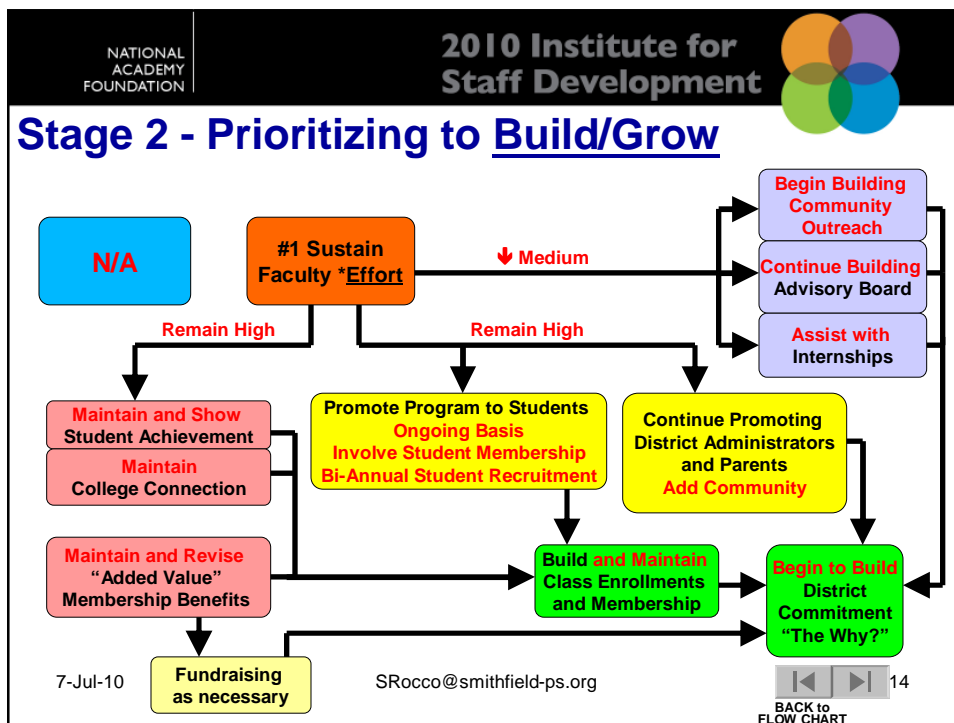
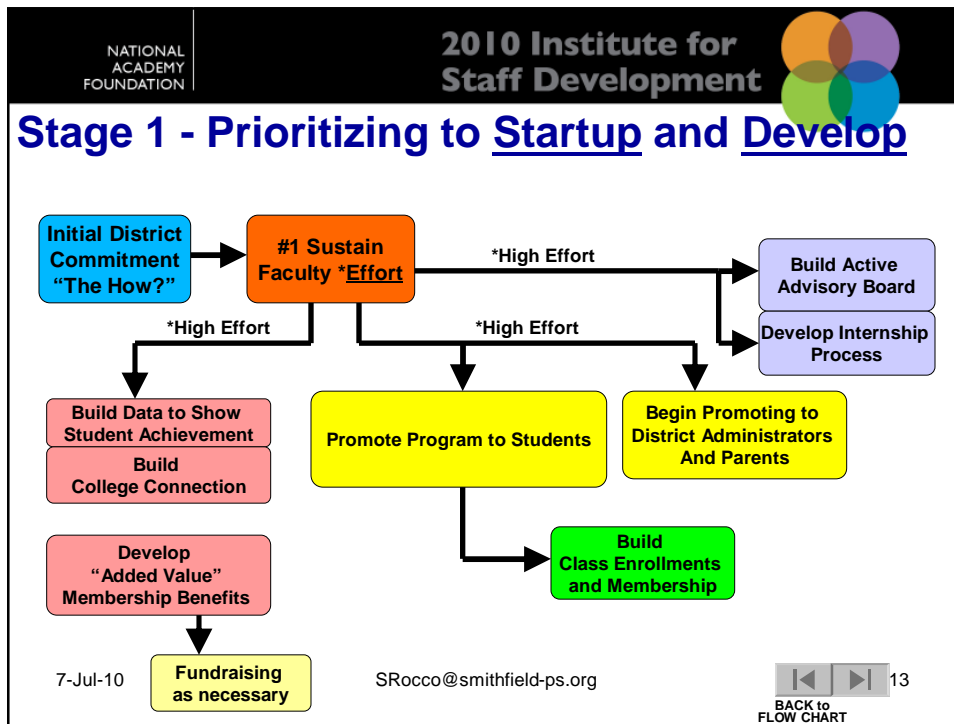
Ultimate Goals are:

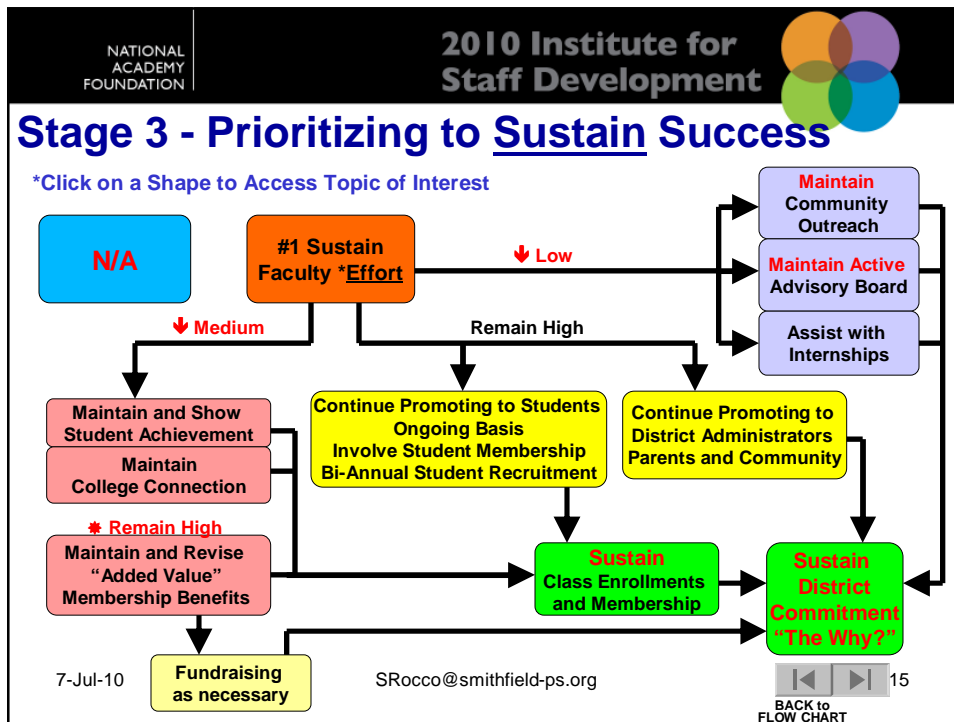
- *Embed Those Roots*
- *Maintain your Enrollments and Membership*
- *Maintain District Support*

(Illustrations Next)

7-Jul-10

SRocco@smithfield-ps.org





NATIONAL ACADEMY FOUNDATION | 2010 Institute for Staff Development

Visit us at: www.shsaof.org

- **Our Teaching Entrepreneurship Web Site**
<http://www.ezeport.com/NAF%20Institute/Entrepreneurship.htm>
- **EZ E-Portfolios**
<http://www.ezeport.com>
- **Excellent Business Ed. Resources**
<http://www.sjrbiz.info>
<http://www.ezeport.com/NAF%20Institute/Resources.htm>

7-Jul-10 | SRocco@smithfield-ps.org | 44 | BACK to FLOW CHART